

General Information



Conference language

English. Simultaneous interpretation will NOT be provided.

Technical details

The notebooks that will be used for presentations run with Windows XP using PowerPoint 2002 and Adobe Acrobat Reader.

There will be a poster session. You have to attach your poster on the panel with your poster number. Poster lists with numbers will be provided on-site. One panel will be provided for each poster. Posters should be mounted using power stripes (no other tape, no pins).

The dimensions of the poster boards are 90 cm wide x 200 cm high.

Conference fee and registration

Please register using the registration form (download at <http://www.ufz.de/gwtox>). The conference fee is for payment until

Dec. 15, 2006: € 275 (students: € 135)

after Dec. 15, 2006: € 300 (students: € 150)

Students: Please send copy of your student's ID along with your registration form.

The conference fee includes the excursion and the icebreaker party, lunch and coffee breaks.

For bank details, please see registration form.

Excursion

There will be an excursion to Zeitz or Leuna on March 13, 2007. It starts at 8:30 a.m. at the conference venue Leipziger KUBUS. Lunch in the beautiful Stottmeister restaurant is included. You will be back for working groups at the Leipziger KUBUS approx. 3 p.m.

General Information



Accommodation

Soon a hotel fax form together with information on accommodation of all categories will be available on the conference webpage.

<http://www.ufz.de/gwtox>

Social events

There will be an introductory lecture on Sunday, March 11, 2007, 7 p.m., followed by the icebreaker party (incl.), approx. 8 p.m., both in the conference venue Leipziger KUBUS.

The conference dinner will take place on Monday, March 12, 2007 (€ 10 per person incl. buffett+2 drinks): <http://www.moritzbastei.de>

Conference venue: Leipziger KUBUS

The Leipziger KUBUS is the UFZ conference venue. It provides excellent modern meeting facilities of different size for congresses, meetings and training. For information on how to get there etc., please visit

<http://www.leipziger-kubus.de>

Address: Permoserstr. 15, 04318 Leipzig.

Contact

for scientific questions:

Dr. Kristin Schirmer, UFZ
kristin.schirmer@ufz.de

Dr. Rolf Altenburger, UFZ
rolf.altenburger@ufz.de

for questions referring to the organization:

Ms. Ogarit Uhlmann MSc.

F&U confirm, Permoserstr. 15, 04318 Leipzig, Germany

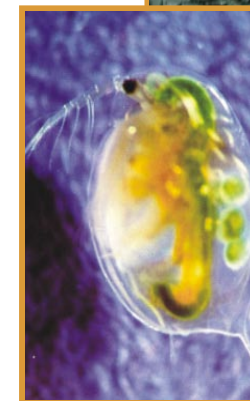
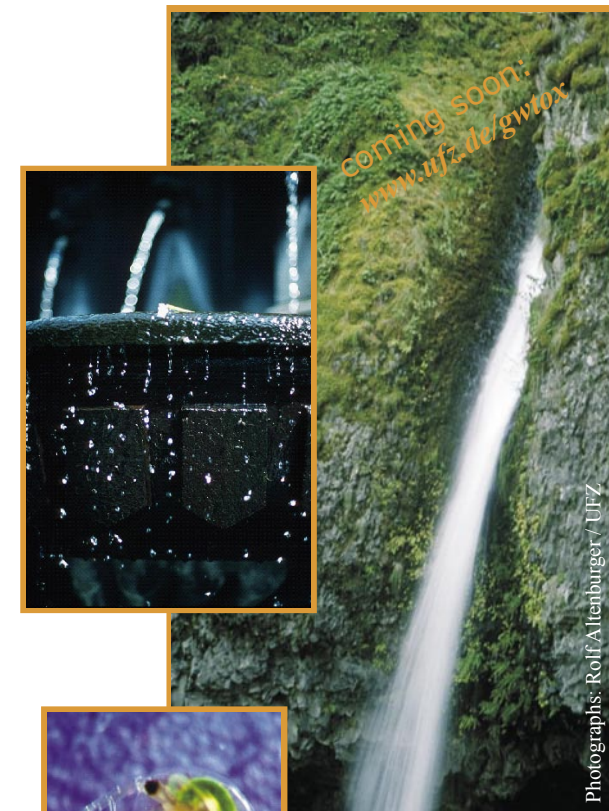
Phone: +49 341 / 235-2264

Fax: +49 341 / 235-2782

gwtox@fu-confirm.de

International Workshop Groundwater Toxicology

11 - 13 March 2007



Photographs: Rolf Altenburger / UFZ



UFZ Centre for Environmental Research
Leipzig-Halle
in the Helmholtz Association

Invitation



Groundwater is a hidden resource of tremendous importance. About 99% of all available fresh water is stored as groundwater. Groundwater is an important reserve for use in industry and agriculture, and for abstraction as drinking water. In Europe, for example, groundwater is estimated to be the basis for more than 65% of the drinking water produced. Moreover, it is also of ecological value in maintaining wetlands and river flows and acting as a buffer through dry periods. Finally, groundwater is a habitat for organisms and an ecosystem in itself. Despite its importance, groundwater has thus far not been protected with the exception of its abstraction for drinking water. With the establishment of the EU water framework directive (2000/60/EC) and the anticipation of a daughter directive on the protection of groundwater (COM 2003 5550 final), this situation is about to change.

Groundwater – a resource at risk In regions with prolonged, intense anthropogenic activities, such as at sea ports, large scale chemical industrial complexes, metal mining areas, and military sites, large areas are known to suffer from complex subsurface contamination and immense volumes of groundwater may be found to be heavily contaminated. These so-called megasites require novel avenues to risk perception and control. This is because their complexity generally renders traditional approaches, which have focussed on well-defined single spot contaminations, unsuitable.

The acknowledgement of the existence of megasites has provided the impetus for a paradigm shift from a chemical to a receptor-based assessment. With clearly identified

Goal of the Workshop



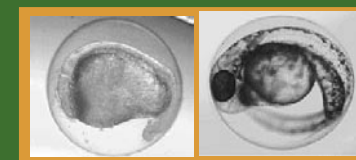
objectives, such as protection of groundwater well users or ecosystems downstream, biological detection and toxicological monitoring tools will greatly rise in their importance. They can provide an integral measure of groundwater quality rather than focussing on individual chemicals alone. Yet thus far, there is no unified approach to assessing groundwater toxicity and more questions exist than can be answered.

Goal of the workshop We will tackle some of the most urgent questions related to groundwater toxicology. These include:

- 1 What strategy should be used to assess groundwater toxicity?
 - Should the focus be on human or ecotoxicity or groundwater ecology or all of the above?
 - What are relevant/appropriate test systems or endpoints?
 - How should groundwater be applied to test systems?
- 2 How can groundwater toxicology be implemented in a groundwater management and risk evaluation scheme?
 - What is needed to make groundwater toxicology an integral part of risk assessment?

Workshop structure The intention is to bring together leading experts as well as young scientists from related but only loosely connected fields relevant to groundwater toxicology: human- and ecotoxicology, ecology, environmental and human health risk assessment, environmental chemistry and regulation.

Call for Papers



The goal is to create an intense, highly productive atmosphere where one pre-requisite of participation is to stay the entire time. We envision two full days, with arrival the afternoon before the meeting and departure in the morning of the third day. The number of participants shall be limited (about 80) and keynote speakers are invited with some instructions to provide direction and stimulate discussion.

Topics for keynote speakers

Water quality criteria and regulation:

Glenn Suter (US-EPA)

Groundwater ecology:

Janine Gibert (University Lyon)

Drinking water toxicology:

Hermann Dieter (UBA Berlin)

Groundwater management:

Elizabeth Edwards (University of Toronto)

Call for Papers

We are inviting abstracts for contributions that deal with the development and/or application of test systems or biosensors to monitor groundwater toxicity. Please send us your abstract, written in English, **before Dec. 15, 2006**. Your abstract should not be longer than 400 words. The abstract must include name(s) and institution(s) of (all) author(s), and e-mail address of the contact author. You will receive notification of the acceptance of your contribution before the end of Dec. 2006. Please submit your abstract to the conference secretary per e-mail: gwttox@fu-confirm.de

Ms. Ogarit Uhlmann MSc.

F&U confirm, Permoserstr. 15, 04318 Leipzig, Germany

Phone: +49 341 / 235-2264

Fax: +49 341 / 235-2782